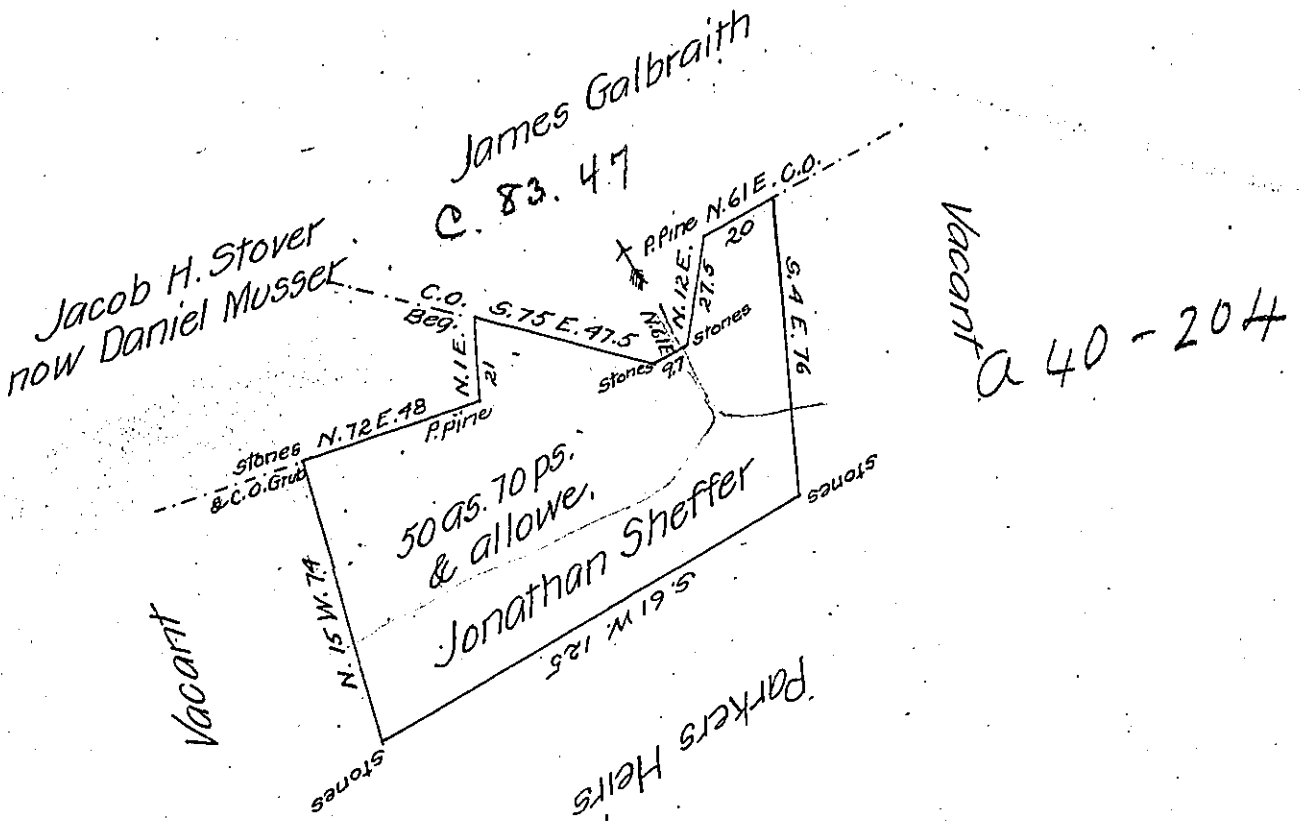


Scale of equal parts 60 ps. to the inch



Draft of a tract of Land situate in Harris township Centre County containing fifty acres and seventy perches and allowance of six per cent for roads &c. Surveyed the 19th day of April A.D. 1848 in pursuance of a Warrant granted to Jonathan Sheffer dated 16th February 1848 for 50 acres.

per Jacob Bollinger D.S.

To John Laporte Esqr. }
 Surveyor General. }

IN TESTIMONY that the above is a copy of the original remaining on file in the Department of Internal Affairs of Pennsylvania, made conformably to an Act of Assembly approved the 16th day of February, 1833, I have hereunto set my Hand and caused the Seal of said Department to be affixed at Harrisburg, this sixteenth day of March 1907

James P. [Signature]
 Secretary of Internal Affairs.